

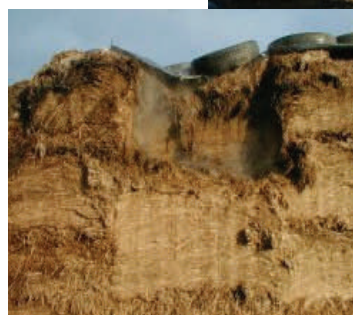


From Field to Feed - *Feeding Your Success*

February Newsletter

SILAGE STOCKS!

Grass silage stocks on many farms are running low. Due to an exceptionally dry Summer last year, most of you had to buffer feed cows at grass with some silage from as early as the end of June. It is worth checking again, that you have got enough forage to last until turn-out & possibly beyond. If you work on a 'magic' turn-out date of 15th April, then you still need enough silage to last for 68 days (at time of writing 6th Feb). Based on high average DM of silages last year - that means 40kg fresh weight/cow/day = 2.72 tonnes total silage per cow needed until turnout.



If maize silage is available in abundance, then ask your nutritionist to tweak diets to use more maize - so that grass silage stocks are stretched out. If you are short on all forages, then your options are more limited; but restrict drastic changes to the milking ration by restricting forage to other stock first. Switch Youngstock & Dry cows onto straw based diets but make sure they are given an adequate protein mix/blend/concentrate to balance this. This shortage of forages has been exacerbated by the hike in feed prices this Winter. The rise in cereal prices has meant many of you will have sold your cereals off the farm & so they cannot be used to replace forage- plus bought-in concentrates & straights have now risen in price. Likewise Moist feeds are now scarce/ very expensive or not available at all.

B & W Feeds have stocks of both conventional & organic cereals **& can supply high-quality mixes/blends**

which can be formulated to suit your exact requirements & help to stretch out feeds available on the farm.

See overleaf for some example diets.

EARLY TURN-OUT?- REMEMBER **MAGNESIUM SUPPLEMENTATION**

If this mild weather continues & you are running short on forage stocks turn-out could be early this spring- *but* remember to provide **additional magnesium before and during turn-out to prevent Hypomagnesaemia** (Grass Staggers) in cattle and sheep.

B & W Feeds can supply several sources of magnesium (Cal Mag, High Mag minerals, & Mag Chloride)-either added to your mill/mix ration or supplied direct to you for your own use.

RATION CHECK?

If you find that you are running short of forage - please ask for advice on checking through your current status & diets to see if any changes can be made to stretch out forage stocks & ensure the diet is balanced until you can turn animals out to graze. But remember to take into account changes in the quality, type and proportions of silages you do have - it is worth getting your silages re-tested again now to ensure any changes are accounted for and performance is maximised.

B & W Organic Blends Available Now:

70% ORGANIC BEEF REARER

(17% Crude Protein, 13.0 ME)

Organic Triticale	44.0%
Organic Beans	26.0%
Sugarbeet	12.5%
NGM Prairie Meal	6.5%
NGM Molasses	5.0%
Limestone Flour	2.5%
Salt	2.5%
Cal Mag	1.0%

This is just one example of the many Organic Blends B & W can now manufacture.
PLEASE RING FOR MORE INFORMATION OR A QUOTATION IN BULK OR BAGS.

B & W Beef/Youngstock Blends

YOU CANNOT BEAT FINISHING BEEF ON BARLEY BASED DIETS! If you think cereals are too expensive now to feed your beef stock - but are finding that the bought-in concentrate you are feeding isn't doing the job! - try our 13% Bull/Beef Finisher mix. It will probably be more expensive than traditional beef concentrates but it will ensure better liveweight gain & therefore speed up finishing time. It is a false economy to use a lower quality/cheaper feed if it takes 2-3 months longer to finish your beef cattle.

These are two examples of the range of youngstock/rearer & beef finisher blends that B & W can offer, for conventional beef/dairy systems but if you wanted a special formulation customised to suit your exact requirements - please ring in.

B & W Youngstock Mix 16%

Rolled Barley	26.25%
Rolled Wheat	50.5%
Sugarbeet	7.5%
Hipro Soya	6.5%
Molasses	5.0%
GP Cattle Min	2.0%
Feed Grade Urea	1.25%
Limestone Flour	1.0%

B & W Bull/Beef Finisher 13%

Rolled Barley	58.0%
Rolled Wheat	20.0%
Sugarbeet	12.5%
Molasses	5.0%
Limestone Flour	2.0%
GP Cattle	1.25%
Feed Grade Urea	1.25%

PLEASE RING FOR MORE INFORMATION OR A QUOTATION IN BULK OR BAGS.

Introduce a New Mobile Mill & Mix Customer & Receive £25.00 off your next invoice.



Interested in Relief Work?

We have vacancies for the following relief drivers:

Mill & Mix Operator : No LGV Licence required,
Bulk Blower / Curtainsider driver: LGV Class C

Full training provided

If so please call, Michael Stacey on 01258 830100



Repairs & Servicing Horse Box/Trailers

Please call
01258 830100 for more information

B&W Feeds (Mobile) Ltd

Bussey Stool Farm

Tarrant Gunville

Blandford

Office Tel: 01258 830100

For Further Details – please contact Tracey Lownds or Mel White (Technical Feed Advisor)

